

Panasonic

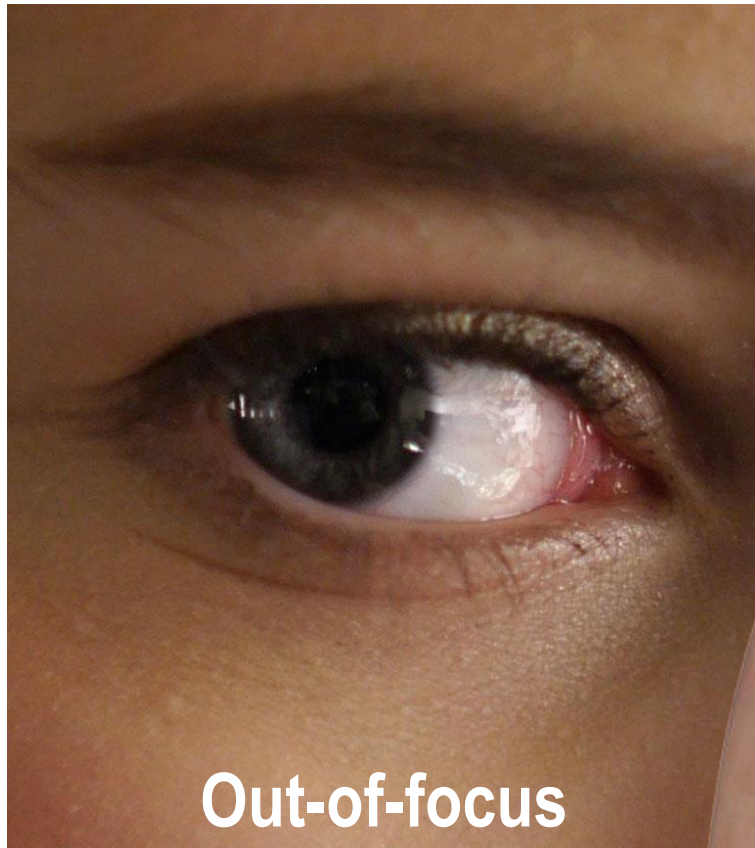
POST FOCUS

Confidential / Internal Use Only / Embargo: November 20, 2015 at 6:00 (GMT)

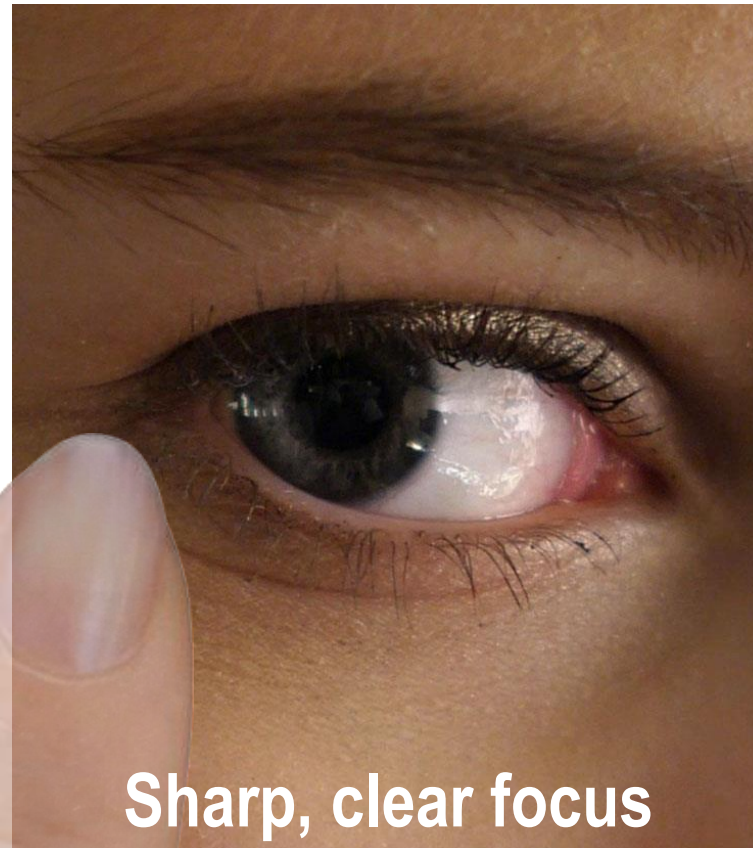


POST FOCUS

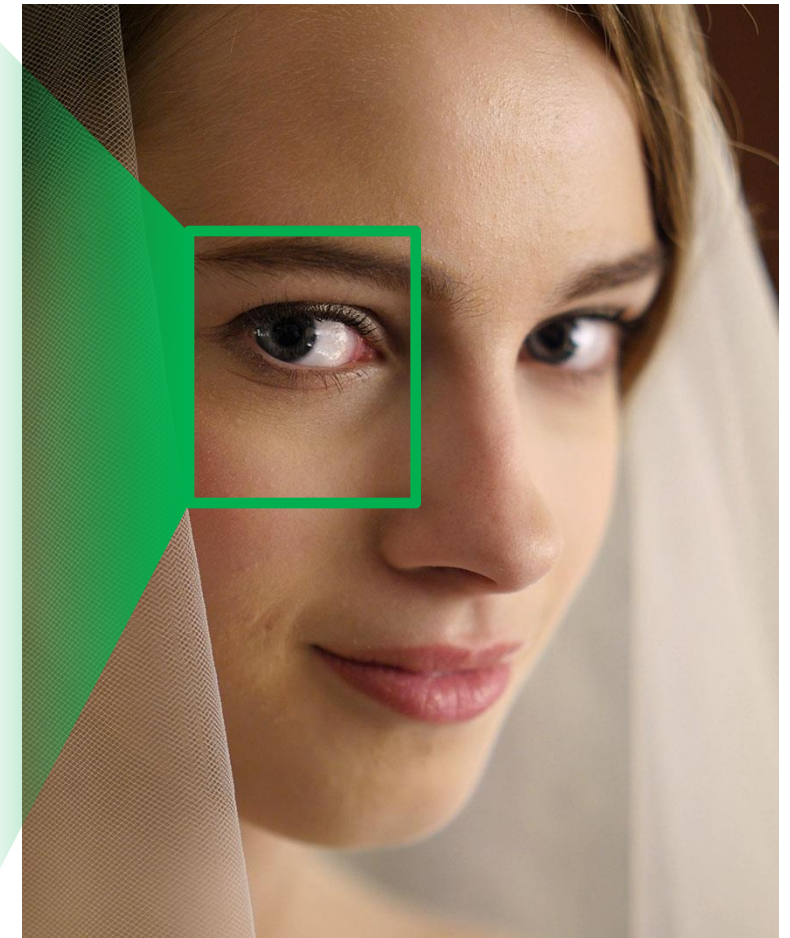
Panasonic is proposing a new photographic experience
Select the in-focus area after shooting with easy touch operation



Out-of-focus
Before selecting



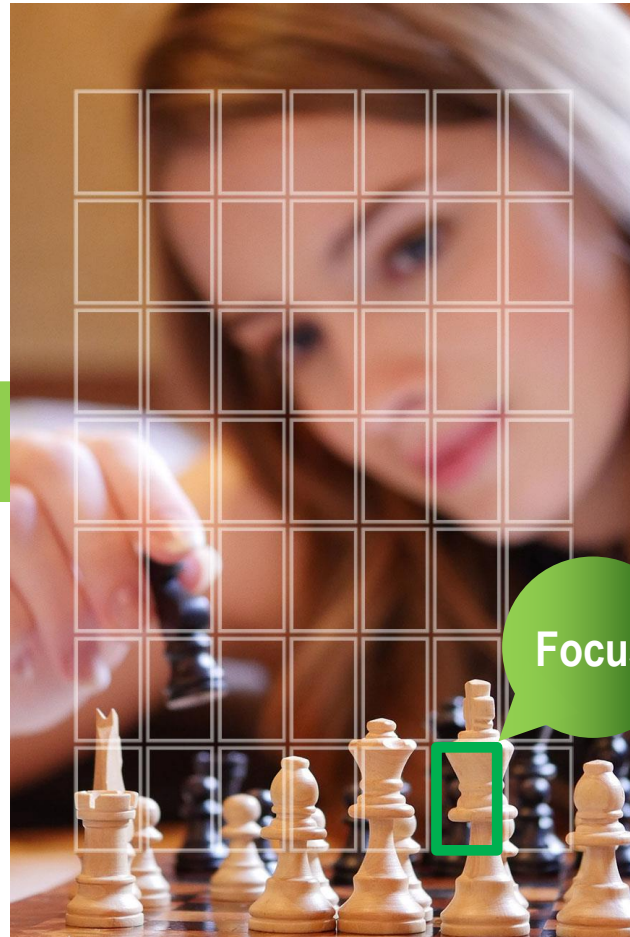
Sharp, clear focus
With Post Focus



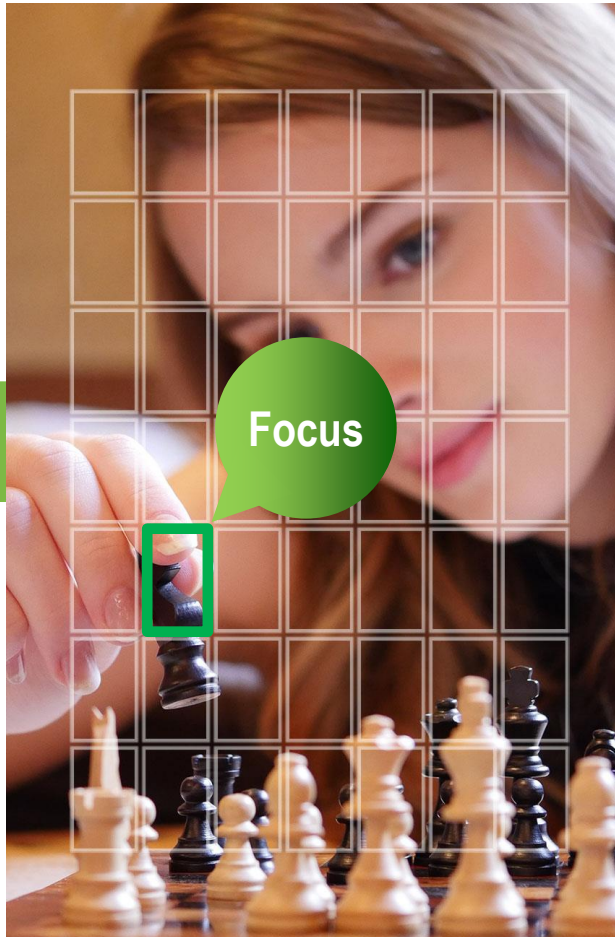
DFD (Depth from Defocus) Technology calculates the focus areas from a max. of 49 areas

4K burst images are shot at 30fps while shifting the focus area

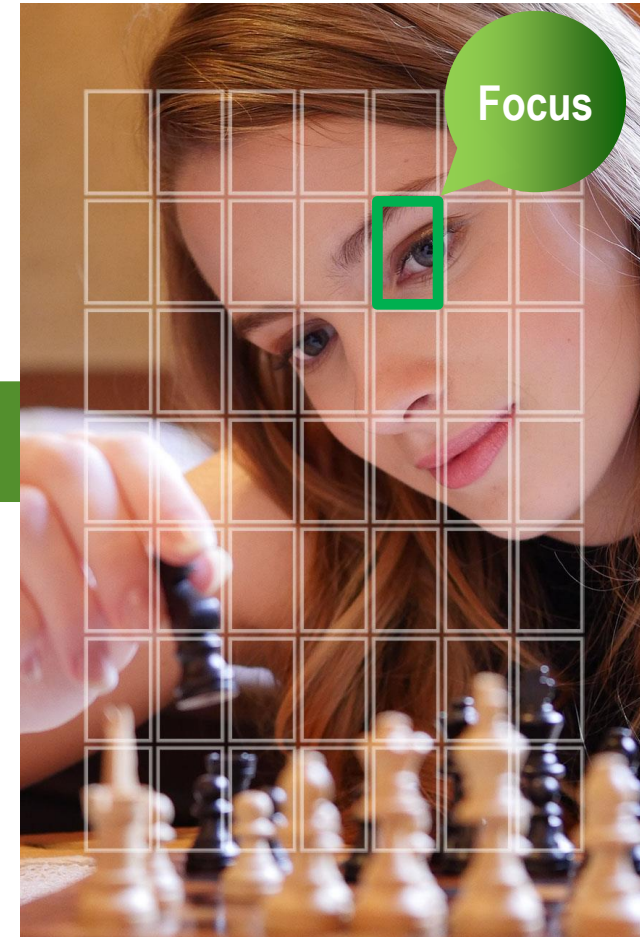
Near



Focus



Far



Macro Shots

You can choose the shot that meets your photographic intent.



Getting Best In-Focus Shots

You can always get best in-focus shots.



Changing perspectives

You can pull different perspectives from an image depending on the part you focus on.





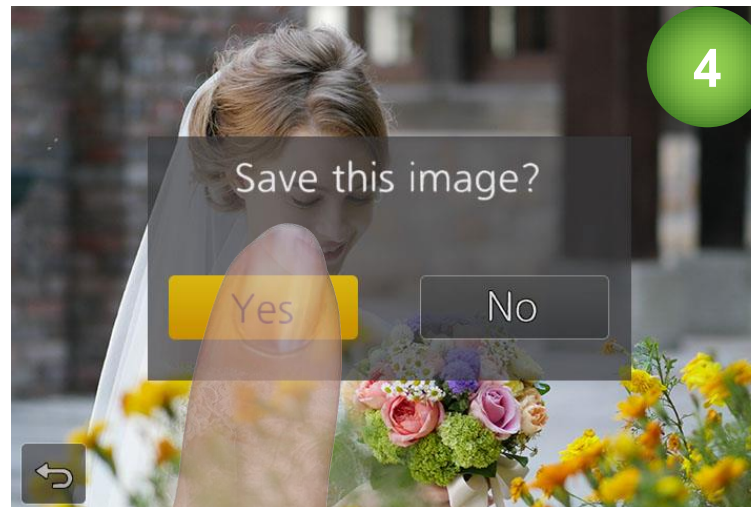
Set*



Press the shutter button



Select focus area



Save



The image is recorded as a 4K MP4 file.

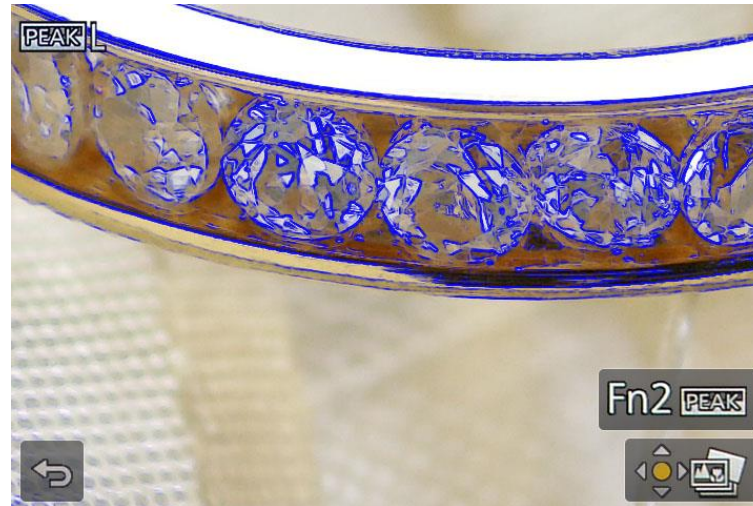
JPEG images cropped out of MP4 file are 8MP equiv. resolution for printing up to A3 (11"x17") size.

Photos can be selected repeatedly while maintaining the image quality of the data, provided that the original data isn't deleted.



5x enlarged view

You can zoom in to see subtle nuances and set the focus precisely (pinpoint).



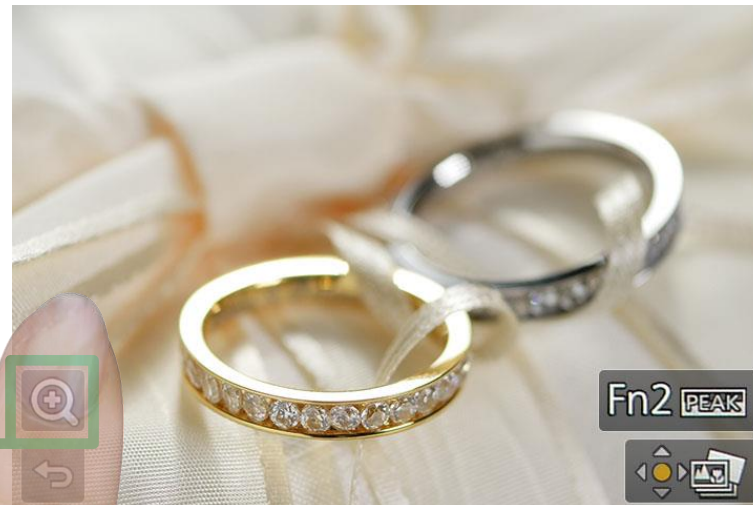
Focus peaking

Highlighting the areas that are in sharp focus.



Focus adjustment

You adjust the focal point on the touch monitor just as you like.



**Optional functions enable
more precise setting**

A firmware update service will be available on November 25, at 1:00 AM (GMT)

LUMIX G7



LUMIX GX8



LUMIX FZ300



Also to be featured on 2016 models !